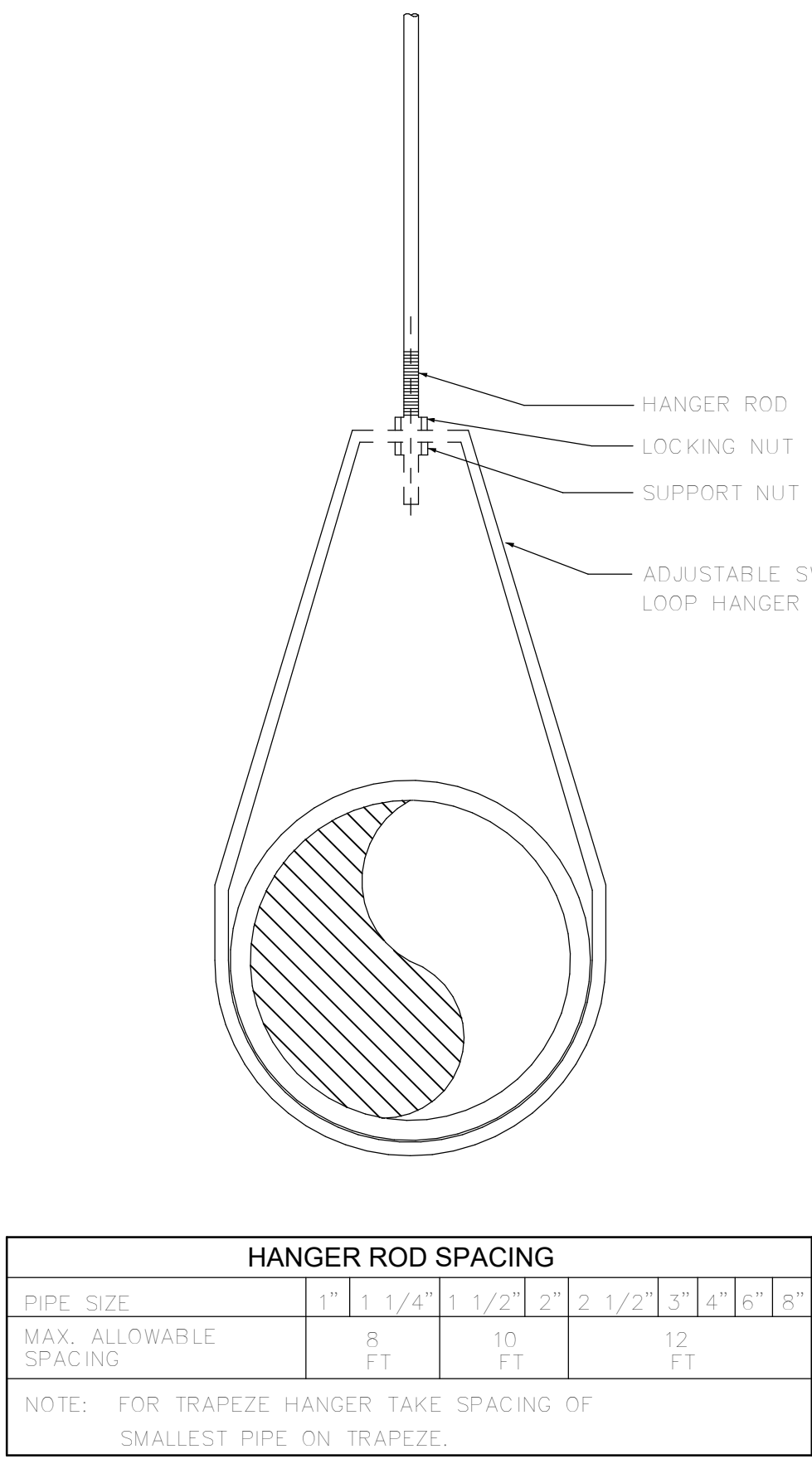
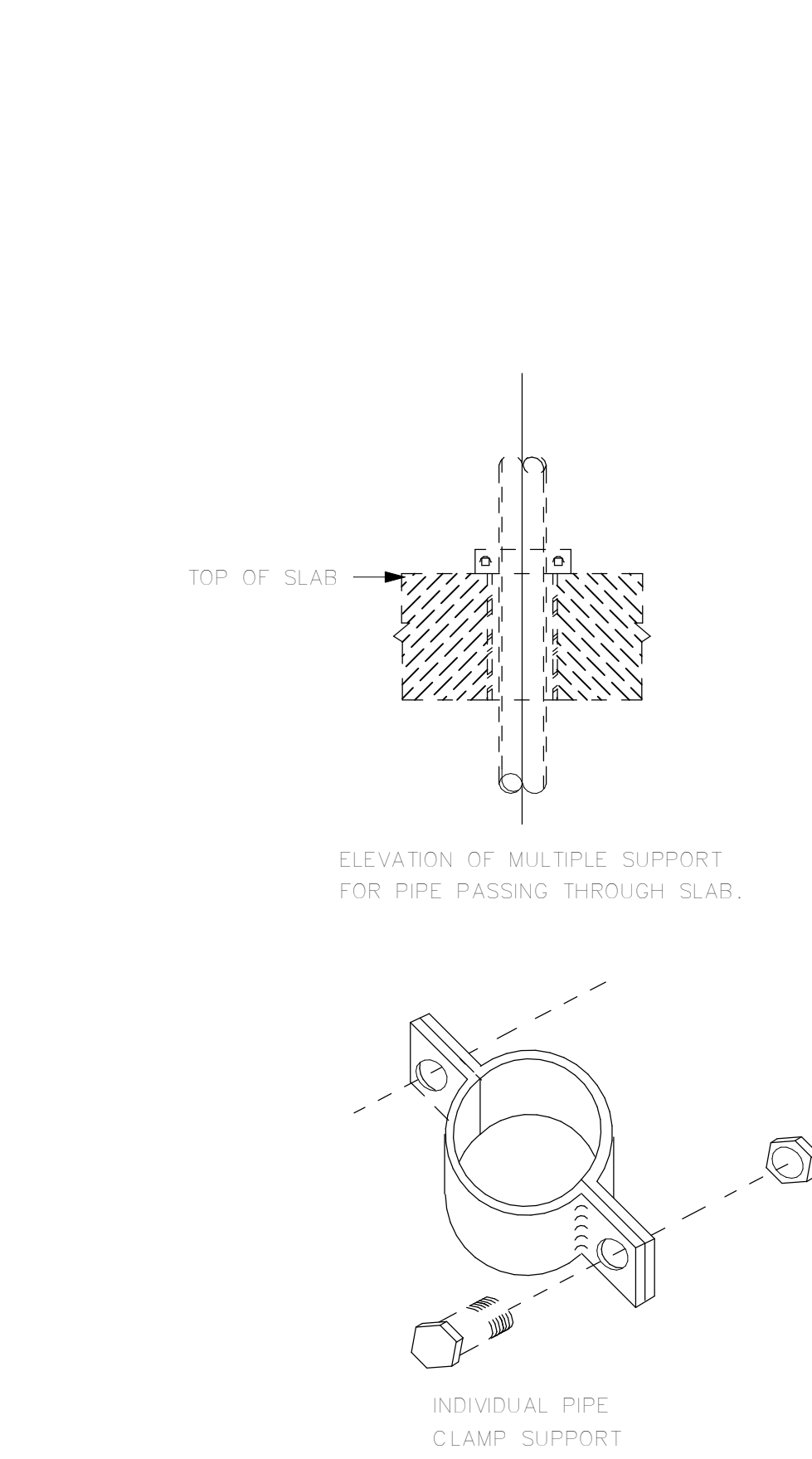


4/15/2019 2:07:40 PM
C:\new Projects\17-UNCW\Parking Deck II - FP_T_ABRANDON@CLARKNEXSEN.COM\14

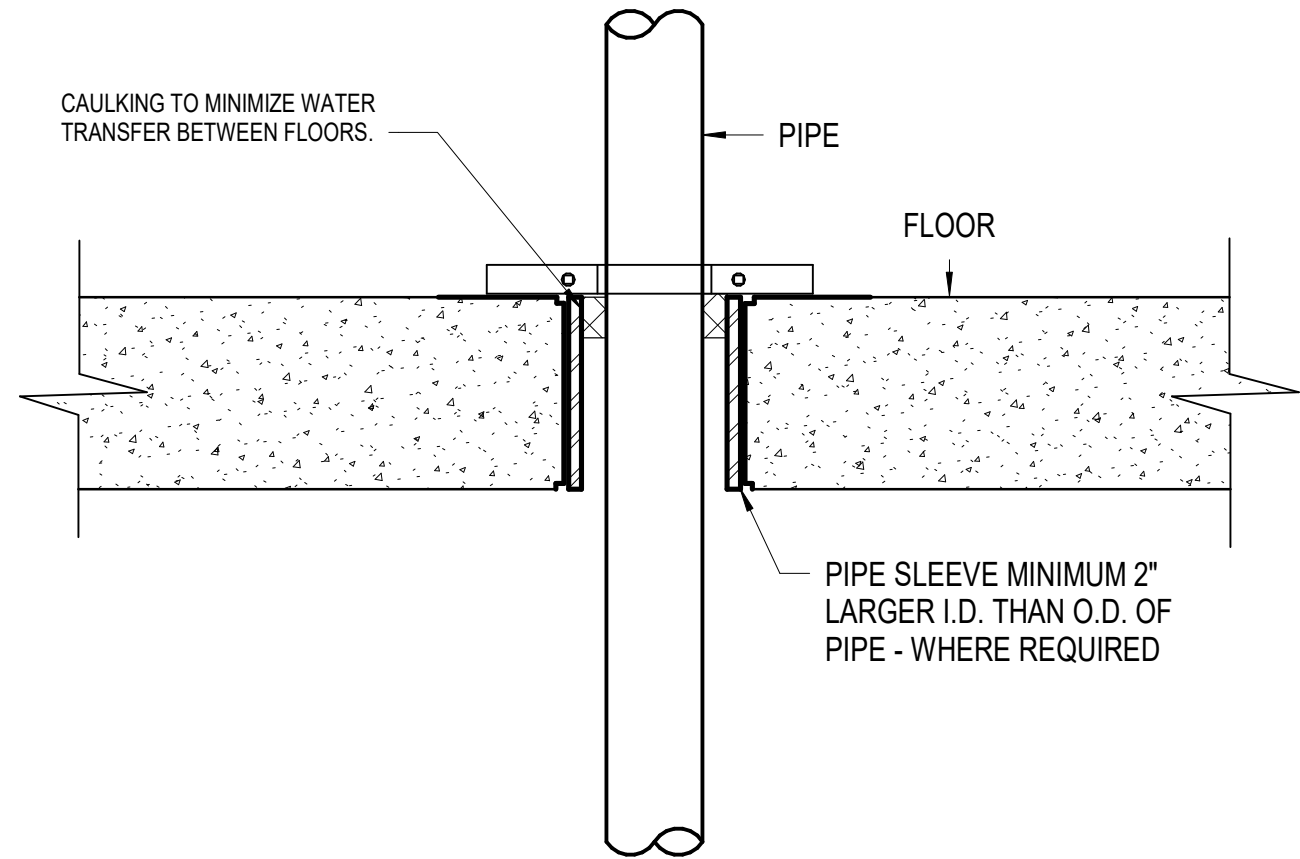
1
2
3
4
5
6
E
D
C
B
A



2 ADJUSTABLE SWIVEL LOOP HANGER DETAIL
NO SCALE



1 VERTICAL PIPE SUPPORT DETAIL- FP
NO SCALE



3 PIPE FLOOR PENETRATION - FP
NO SCALE

FIRE SPRINKLER CONTRACTOR NOTE:

SHOP DRAWINGS SHOULD INCLUDE AND BE IN ACCORDANCE WITH WORKING PLAN REQUIREMENTS OF CHAPTER 22 OF NFPA 13. PRODUCT DATA SHOULD INCLUDE AND IDENTIFY ALL MATERIAL, EQUIPMENT, AND ACCESSORY SELECTIONS TO BE INSTALLED.

A COPY OF THE WATER FLOW TEST SHOULD BE INCLUDED. THE HYDRAULIC CALCULATIONS AND SHOP DRAWINGS SHOULD BE SIGNED BY THE FIRE SPRINKLER DESIGNER AND INCLUDE THE NC FIRE SPRINKLER CONTRACTOR (FS) LICENSE NUMBER.

THE CONSTRUCTION DOCUMENTS ARE A PERFORMANCE DESIGN. THE FIRE SPRINKLER CONTRACTOR, AS THE DESIGNER AND CONTRACTOR, MUST PROVIDE ALL NECESSARY MATERIALS AND LABOR FOR A SYSTEM FULLY COMPLIANT WITH ALL APPLICABLE NFPA REQUIREMENTS AND THE CONSTRUCTION DOCUMENTS AT NO ADDITIONAL COST TO THE OWNER. ANY DISCREPANCIES SHOULD BE BROUGHT TO THE ATTENTION OF THE ENGINEER OF RECORD.

AN UPDATED WATER FLOW AND PRESSURE TEST IS TO BE OBTAINED BY THE FIRE SPRINKLER CONTRACTOR TO BE USED FOR THE WORKING PLAN DESIGN AND CALCULATIONS.

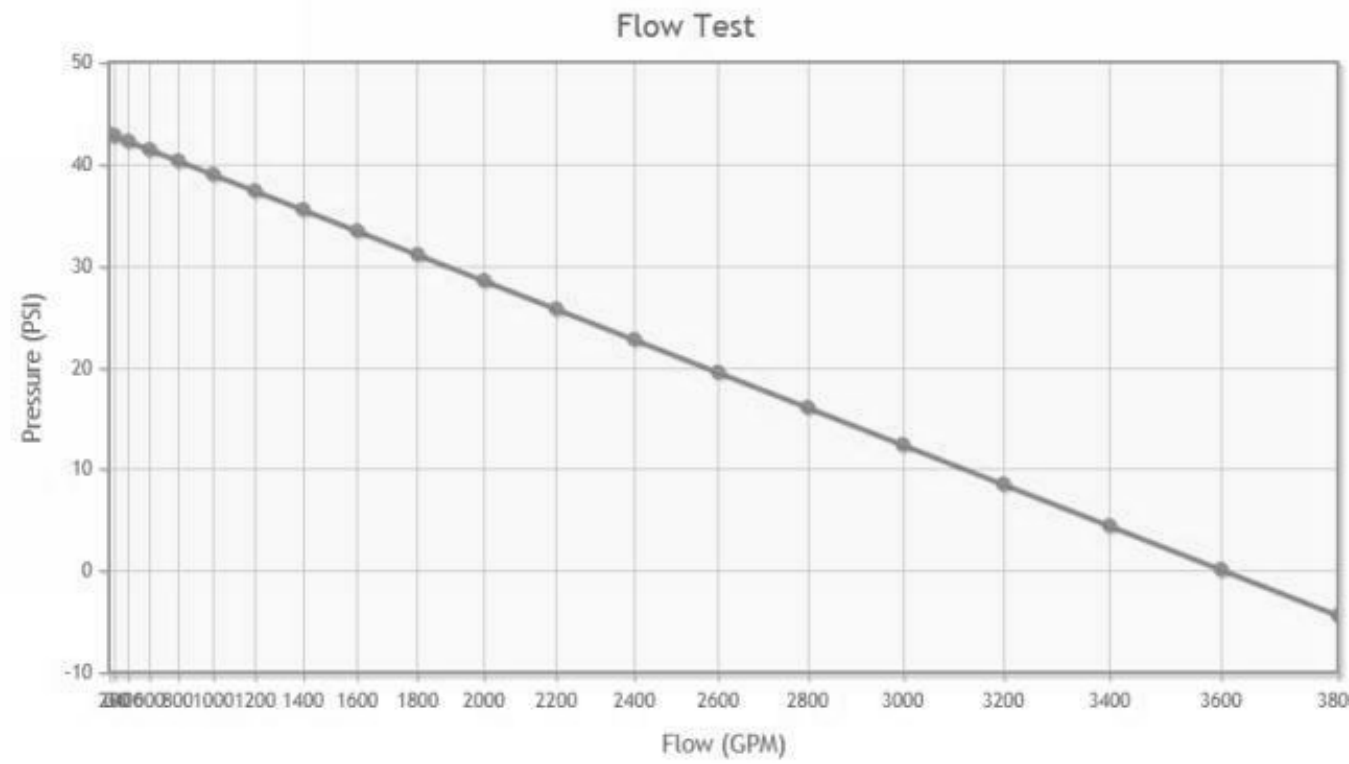
THE WATER FLOW TEST USED FOR THE WORKING PLAN DESIGN SHOULD BE PERFORMED AS INDICATED IN NFPA 13 WHICH USES TWO HYDRANTS, A PRESSURE HYDRANT AND A FLOW HYDRANT. THE TWO HYDRANTS SHOULD BE AS CLOSE TO THE POINT OF CONNECTION AS POSSIBLE. A COPY OF THE FLOW TEST AND TEST HYDRANT LOCATIONS SHOULD BE SUBMITTED WITH THE SHOP DRAWING PACKAGE.

AS A FACTOR OF SAFETY TO ACCOUNT FOR FLUCTUATIONS IN WATER SUPPLY, THE DESIGN CALCULATIONS SHOULD BE BASED ON AN AVAILABLE WATER SUPPLY OF 10 PSI LESS STATIC PRESSURE, 10 PSI LESS RESIDUAL PRESSURE AND 10% LESS RESIDUAL FLOW THAN MEASURED.

PER 2012 NCGS 1413.1, IN BUILDINGS REQUIRED TO HAVE STANDPIPES BY SECTION 905.3.1, NOT LESS THAN ONE STANDPIPE SHALL BE INSTALLED WHEN THE PROGRESS OF CONSTRUCTION IS NOT MORE THAN 40 FEET IN HEIGHT ABOVE THE LOWEST LEVEL OF FIRE DEPARTMENT VEHICLE ACCESS. SUCH STANDPIPE SHALL BE PROVIDED WITH FIRE DEPARTMENT HOSE CONNECTIONS AT ACCESSIBLE LOCATIONS ADJACENT TO USABLE STAIRS. SUCH STANDPIPES SHALL BE EXTENDED AS CONSTRUCTION PROGRESSES TO WITHIN ONE FLOOR OF THE HIGHEST POINT OF CONSTRUCTION HAVING SECURED DECKING OR FLOORING

THE PRESSURE AND FLOW WERE REDUCED PER THE REQUIREMENTS OF THE SCO GUIDELINES.

Graph Points	Data Points
43 Static Pressure	Flow 2569 130
39 Residual Pressure	Pressure 20
999 Residual Flow	



NOTE:

THE AVAILABLE FIRE FLOW AT 20 PSI WAS OBTAINED FROM THE CURRENT HYDRANT TEST DATA ADJUSTED PER THE SCO PRESSURE AND FLOW REDUCTIONS.

FIRE PROTECTION LEGEND		
SYMBOL	DESCRIPTION	
FP	FIRE PROTECTION	
D	DRAIN	
DROP RISE	DROP OR RISE	
FLOW ARROW	FLOW ARROW	
VALVE IN RISER	VALVE IN RISER	
BALL VALVE	BALL VALVE	
BUTTERFLY VALVE	BUTTERFLY VALVE	
STRAINER	STRAINER	
PIPE SIZE	PIPE SYSTEM ABBREVIATION	UTILITY RISER IDENTIFICATION

FIRE PROTECTION SHEET LIST	
Sheet Number	Sheet Name
FP001	FIRE PROTECTION LEGEND, SCHEDULES AND DETAILS
FP101	FIRST LEVEL - FIRE PROTECTION PLAN
FP102	SECOND LEVEL - FIRE PROTECTION PLAN
FP103	THIRD LEVEL - FIRE PROTECTION PLAN
FP104	FOURTH LEVEL - FIRE PROTECTION PLAN
FP105	FIFTH LEVEL - FIRE PROTECTION PLAN
FP201	FIRE PROTECTION PIPING ISOMETRIC

FIRE PROTECTION SYSTEM DESIGN CRITERIA

WATER SUPPLY INFORMATION		
HYDRANT NO.(LOCATION):	HYDRANT NO. WH 0037 - FLOW HYDRANT	
HYDRANT NO.(LOCATION):	HYDRANT NO. WH 0074 - PRESSURE HYDRANT	
STATIC PRESSURE (PSIG):	53	
RESIDUAL PRESSURE (PSIG):	49	
HYDRANT NO.(LOCATION):	FLOW HYDRANT - LOCATED ALONG RIEGEL ROAD IN FRONT OF HERBERT FISHER FIELD HOUSE	
PITOT PRESSURE (PSIG):	44 PSI	
FLOW (GPM):	1110	
CALCULATED FLOW AT 20 PSIG (GPM):	2569 (ADJUSTED FLOW PER THE SCO PRESSURE AND FLOW REDUCTIONS. REFER TO THE ADJACENT GRAPH)	
DISTANCE TO TEST GAUGES (FT):		
HORIZONTAL:	NA FEET	
ELEVATIONS:		
TEST HYDRANT:	XXX.00	
BASE OF RISER:	XXX.00	
SOURCE OF WATER SUPPLY :		
MUNICIPAL DEAD END	NA	
MUNICIPAL RECIRCULATION	MUNICIPAL 10" WATER MAIN	
OTHER:	NA	
TESTED BY:	DAN SHOOK - McKim & CREED	
TEST DATE:	01.16.19 @ 2:15 PM	
BACKFLOW PREVENTION SERVICE :		
NA		
NFPA HAZARD CLASSIFICATION		
STANDPIPES MANUAL DRY CLASS 1 STANDPIPE SYSTEM		
CODES AND STANDARDS		
SYSTEM COMPONENT	APPLICABLE NFPA STANDARD/YEAR EDITION OR OTHER APPLICABLE CODES OR STATUTES	
FIRE PROTECTION	2018 NORTH CAROLINA FIRE PREVENTION CODE, STATE CONSTRUCTION OFFICE - WATER BASED FIRE PROTECTION SYSTEMS AND GUIDELINES AND POLICES 2014	
SPRINKLER SYSTEM	NA	
STANDPIPES	NFPA-14 - 2013 EDITION - HYDRAULICALLY CALCULATE THE MANUAL WET STANDPIPE BASED ON THE RESPONDING PUMPER TRUCK REQUIREMENTS AND 125 PSI AT THE HYDRAULICALLY REMOTE 2-1/2" HOSE VALVE.	
FIRE PUMP	NA	
PRIVATE MAINS	NA	
NOTES		
SPRINKLER CONTRACTOR IS REQUIRED TO ORDER A NEW FLOW TEST PRIOR TO SPRINKLER DESIGN IF THE TEST IS ONE YEAR OR MORE OLDER.		
SEISMIC DESIGN CRITERIA		
SEISMIC DESIGN CATEGORY	C	THE FIRE PROTECTION SYSTEM SEISMIC RETRAINTS SHALL BE DESIGNED AND PROVIDED PER THE REQUIREMENTS OF THE 2018 NORTH CAROLINA BUILDING CODE.
SEISMIC IMPORTANCE FACTOR	1.0	

FIRE PROTECTION GENERAL NOTES	
NO.	DESCRIPTION
1	PIPE HANGERS AND CONCRETE INSERTS UTILIZED FOR FIRE PROTECTION THIS PROJECT SHALL BE PROVIDED BY THE FIRE PROTECTION SUB-CONTRACTOR. THIS INCLUDES ALL SUPPLEMENTAL STEEL, ETC.
2	ALL LINTELS REQUIRED IN MASONRY AND STUD WALLS FOR PIPING PENETRATIONS SHALL BE PROVIDED BY THE GENERAL CONTRACTOR.
3	COORDINATE VERTICAL PIPING WITH ARCHITECTURAL PLANS FOR EXACT LOCATION OF RISER. IF THERE IS A CONFLICT, NOTIFY THE ARCHITECT PRIOR TO INSTALLATION.
4	ALL SPRAY ON FIREPROOFING WHICH SETTLES ON FIRE PROTECTION PIPING SHALL BE REMOVED BY THE GENERAL CONTRACTOR.
5	HYDRAULIC CALCULATIONS AND FABRICATION SHOP DRAWINGS BASED ON ACTUAL CODE REFINEMENTS SHALL BE A PART OF THIS CONTRACT, FURNISHED BY THE FIRE PROTECTION SUB-CONTRACTOR.
6	THE FIRE PROTECTION DRAWINGS ARE APPLICABLE TO THE GENERAL CONTRACT.
7	COORDINATE ALL WORK OUTSIDE OF A DESIGNATED AREA OF GENERAL CONSTRUCTION WITH THE OWNER OR THE ARCHITECTS REPRESENTATIVE.
8	THE FIRE PROTECTION CONTRACTOR SHALL BE RESPONSIBLE FOR DAILY CLEANUP AND DEBRIS REMOVAL OF ITEMS GENERATOR BY HIS WORK. ALL TRASH BINS USED SHALL BE INDEPENDENT OF THE OWNERS.
9	THE REQUIRED SHOP DRAWINGS SHALL SPECIFICALLY INDICATE ALL EXPOSED PIPING BY NOTE IN PUBLIC AREAS. THE CONTRACTOR SHALL PROVIDE DETAILS INDICATING THE METHOD OF ROUTING, HANGING AND COORDINATION WITH THE OTHER BUILDING COMPONENTS. THE EXPOSED PIPING SHALL BE ROUTED AS HIGH AS POSSIBLE AND IN AN ORDERLY MANNER.
10	THE FIRE PROTECTION SUB-CONTRACTOR SHALL COORDINATE THE PIPE ROUTING WITHIN THE ELECTRICAL ROOMS TO AVOID CROSSING OVER ELECTRICAL PANELS AND ELECTRICAL EQUIPMENT. THE FIRE PROTECTION SUB-CONTRACTOR SHALL SHOW THE ELECTRICAL PANELS AND ELECTRICAL EQUIPMENT ON THE REQUIRED SHOP DRAWING FLOOR PLANS AS CONFIRMATION OF THIS COORDINATION EFFORT.
11	THE FIRE PROTECTION CONTRACTOR SHALL BE RESPONSIBLE FOR COORDINATING THE SCOPE OF WORK BETWEEN THE TRADES PRIOR TO PERFORMING ANY WORK. REFER TO THE SPECIFICATIONS AND DETAILS FOR INSTALLATION INSTRUCTIONS.
12	ALL FIRE PROTECTION HANGERS, INSERTS, CLAMPS, STANCHIONS, BRACKETS, AND ALL THREAD RODS SHALL BE GALVANIZED.
13	NO PIPE PENETRATIONS OF STRUCTURAL MEMBERS, EXCEPT AS NOTED, ARE PERMITTED WITHOUT THE APPROVAL OF THE ARCHITECT/ENGINEER.
14	PROVIDE PIPE PENETRATIONS OF FIRE OR SMOKE PARTITIONS OR WALLS AND MAKE FIRE AND SMOKE TIGHT.
15	PROVIDE UL LISTED THROUGH PENETRATION FIRE STOPPING ASSEMBLIES FOR EACH PENETRATION OF FIRE-RATED ASSEMBLIES.

UNCW
UNIVERSITY of NORTH CAROLINA WILMINGTON
601 S COLLEGE ROAD
WILMINGTON, NORTH CAROLINA 28403
PARKING DECK II AND SURFACE
PARKING (DESIGN-BUILD)
SOUTH CAMPUS - 4965 RIEGEL ROAD

SCO ID NUMBER: 18-19226-01A
CODE: 441828
ITEM: 301

CONTRACTOR
Balfour Beatty
Construction

DESIGNER

CLARK NEXSEN
1523 ELIZABETH AVENUE, SUITE 300
CHARLOTTE, NORTH CAROLINA 28204
704-377-8800

CLARK NEXSEN LICENSE NUMBER: C-1028

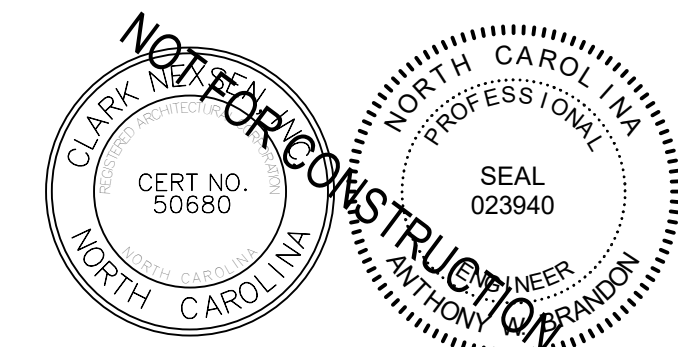
WALKER
CONSULTANTS

13860 Ballantyne Corporate Place
Suite 140
Charlotte, NC 28277
T: 704.247.6230
www.walkerconsultants.com
NC License No. F-0518

MCKIM & CREED

CIVIL ENGINEER
243 NORTH FRONT STREET
WILMINGTON, NORTH CAROLINA
28401
910.343.1048

PROFESSIONAL SEAL



NC CORPORATE ENGINEERING LICENSE #C-1028

SUBMITTAL

04/15/19

CONSTRUCTION DOCUMENT
SUBMITTAL 01

REVISIONS

KEY PLAN

SHEET

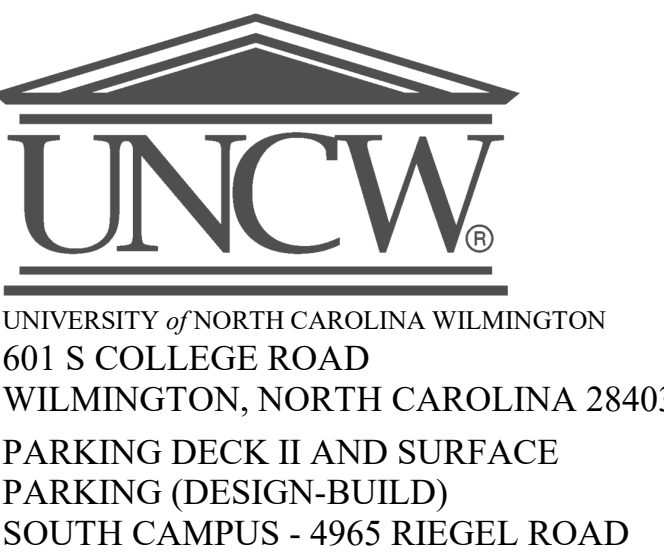
FIRE PROTECTION LEGEND,
SCHEDULES AND DETAILS

FP001

DESIGN: AWB
DRAWN: AWB
REVIEW: CN

CN 8112

FIRE PROTECTION KEYED NOTES	
NO.	DESCRIPTION
S2	2-1/2" FIRE DEPARTMENT HOSE VALVE MOUNTED EXPOSED. THE VALVE SHALL BE PROVIDED WITH A 2-1/2" CAP AND CHAIN. SPANNER LUGS PROVIDE A 2-1/2" NIPPLE BETWEEN THE VERTICAL RISER AND VALVE CONNECTION. THREADS SHALL MATCH THE WILMINGTON FIRE DEPARTMENT STANDARD.
S3	CHECK VALVE
S72	5" x 8" RIGID NPT STORZ CONNECTION, WALL MOUNTED 30 DEGREE DOWN TURN ANGLE. FERRULE ALUMINUM CONNECTION, NITRILE GASKETS, 250 PSI RATED, CAP AND CHAIN, POLISHED CHROME FINISH. AMERICAN FIRE HOSE & CABINET MODEL S24X50SKR OR EQUIVALENT BY GUARDIAN OR PETER ROBERTS
T8	TAMPER SWITCH: THE TAMPER TAMPER SWITCH SHALL BE ELECTRICALLY SUPERVISED WITH THE BUILDING FIRE ALARM SYSTEM.



SCO ID NUMBER: 18-19226-01A
CODE: 441828
ITEM: 301

CONTRACTOR
Balfour Beatty
Construction

DESIGNER

CLARK NEXSEN
1523 ELIZABETH AVENUE, SUITE 300
CHARLOTTE, NORTH CAROLINA 28204
704-377-8800

CLARK NEXSEN LICENSE NUMBER: C-1028



13860 Ballantyne Corporate Place
Suite 140
Charlotte, NC 28277
T: 704.247.6230
www.walkerconsultants.com
NC License No. F-0518



CIVIL ENGINEER
243 NORTH FRONT STREET
WILMINGTON, NORTH CAROLINA
28401
910.343.1048

PROFESSIONAL SEAL



CORPORATE ENGINEERING LICENSE #C-1028

SUBMITTAL

04/15/19

CONSTRUCTION DOCUMENT
SUBMITTAL 01

REVISIONS

[illegible]

KEY PLAN

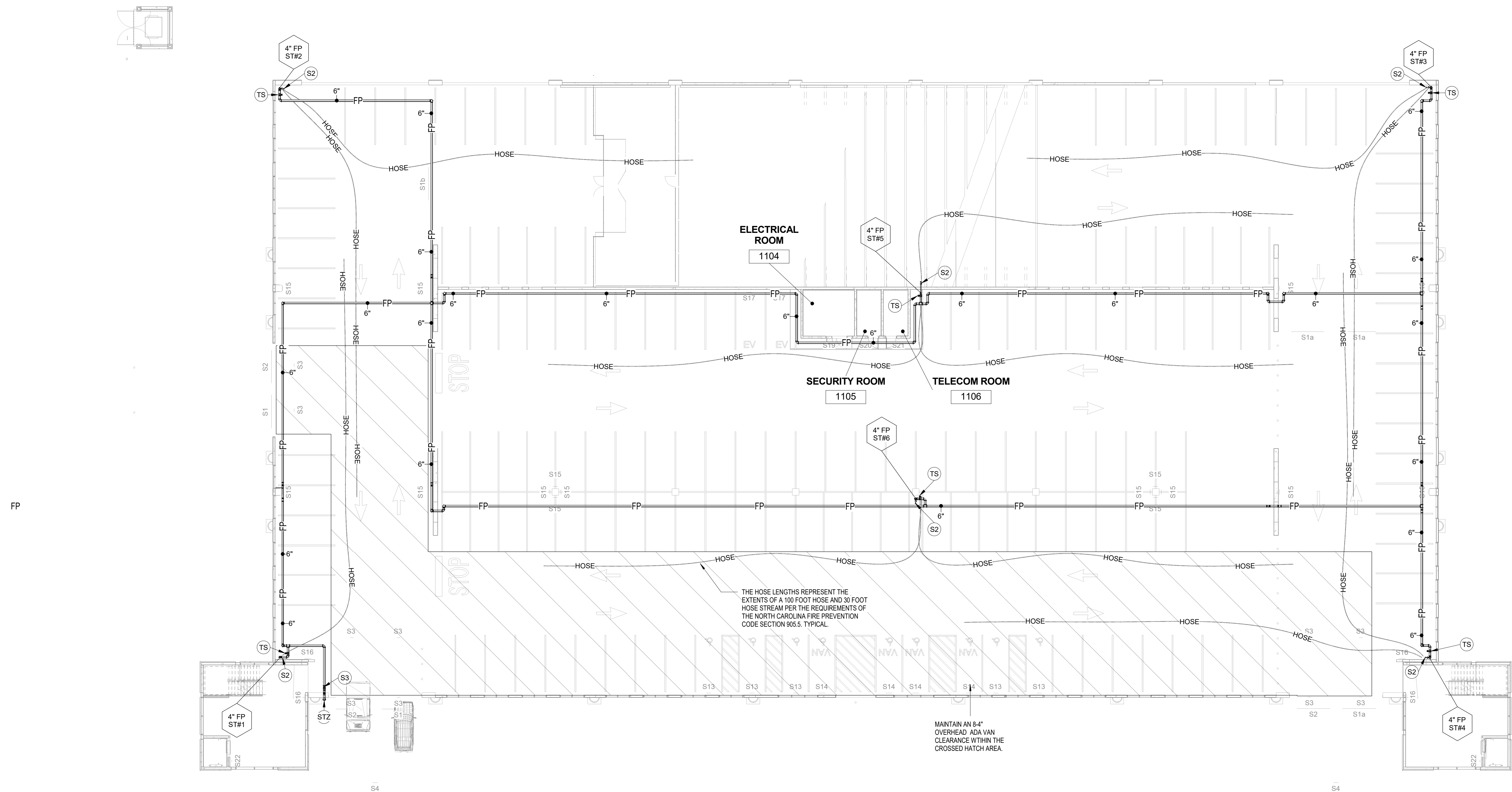
SHEET

FIRST LEVEL - FIRE PROTECTION PLAN

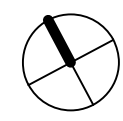
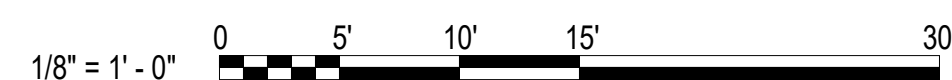
FP101

DESIGN: AWB
DRAWN: AWB
REVIEW: CN

CN 8112

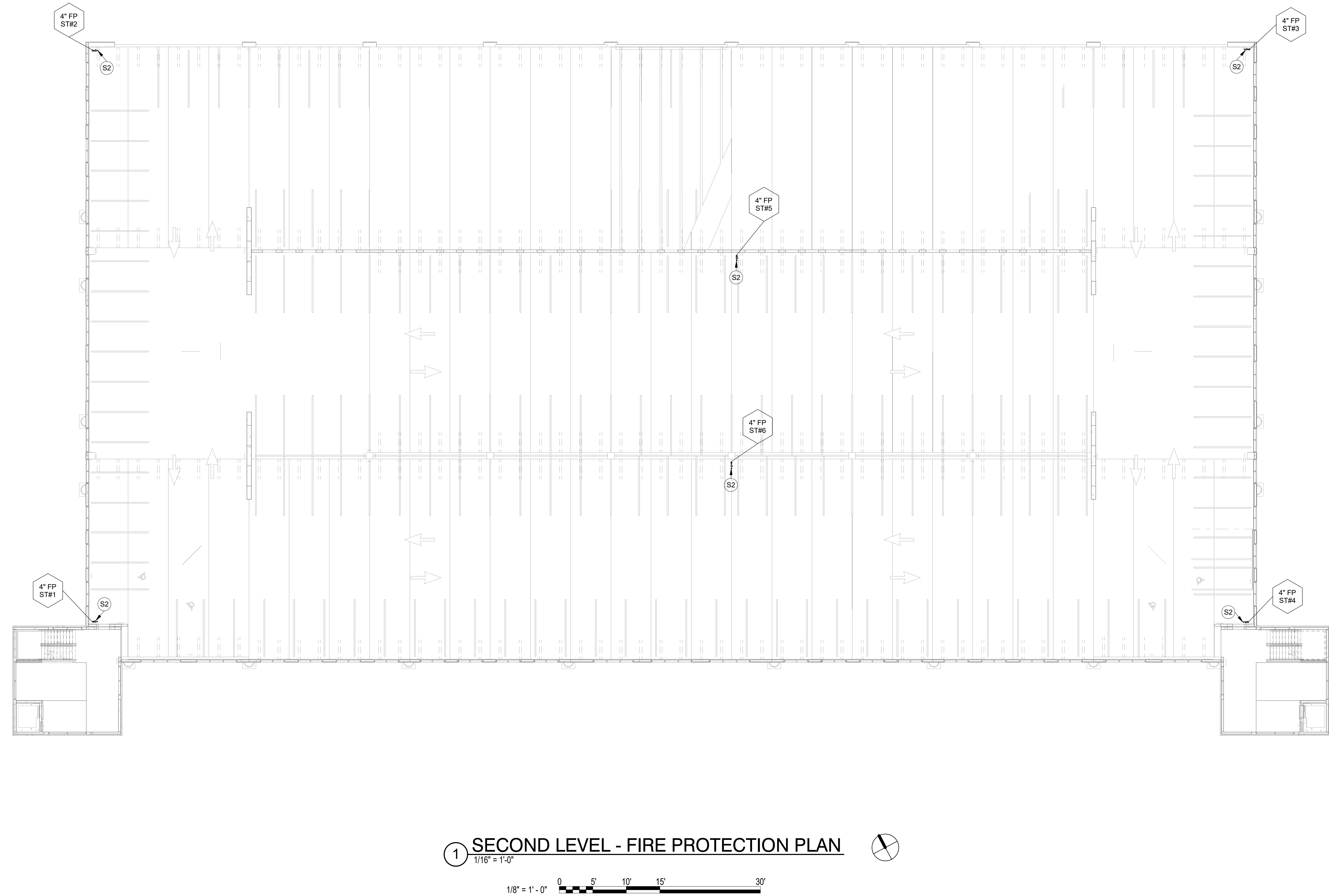


1 FIRST LEVEL - FIRE PROTECTION PLAN
1/16" = 1'-0"




4/15/2019 2:57:52 PM
C:\next Projects\6172-UNCW Parking Deck II - P17_ABRANDON@CLARKNEXSEN.COM\14

1
E
D
C
B
A



1 SECOND LEVEL - FIRE PROTECTION PLAN

FIRE PROTECTION KEYED NOTES	
NO.	DESCRIPTION
S2	2-1/2" FIRE DEPARTMENT HOSE VALVE MOUNTED EXPOSED. THE VALVE SHALL BE PROVIDED WITH A 2-1/2" CAP AND CHAIN, SPANNER LUGS. PROVIDE A 2-1/2" NIPPLE BETWEEN THE VERTICAL RISER AND VALVE CONNECTION. THREADS SHALL MATCH THE WILMINGTON FIRE DEPARTMENT STANDARDS.



UNIVERSITY of NORTH CAROLINA WILMINGTON
601 S COLLEGE ROAD
WILMINGTON, NORTH CAROLINA 28403
PARKING DECK II AND SURFACE
PARKING (DESIGN-BUILD)
SOUTH CAMPUS - 4965 RIEGEL ROAD

SCO ID NUMBER: 18-19226-01A
CODE: 441828
ITEM: 301

CONTRACTOR



Balfour Beatty
Construction

DESIGNER




CLARK NEXSEN
1523 ELIZABETH AVENUE, SUITE 300
CHARLOTTE, NORTH CAROLINA 28204
704-377-8800

CLARK NEXSEN LICENSE NUMBER: C-1028



WALKER
CONSULTANTS

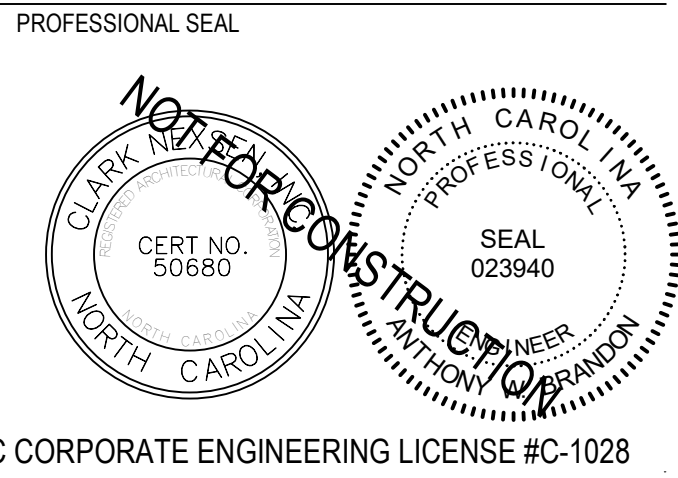
13860 Ballantyne Corporate Place
Suite 140
Charlotte, NC 28277
T: 704.247.6230
www.walkerconsultants.com
NC License No. F-0518



MCKIM & CREED

CIVIL ENGINEER
243 NORTH FRONT STREET
WILMINGTON, NORTH CAROLINA
28401
910.343.1048

PROFESSIONAL SEAL



CLARK NEXSEN
CERT NO. 50680
NORTH CAROLINA
SEAL 023940
NORTH CAROLINA PROFESSIONAL ENGINEER
NATION WIDEN

NC CORPORATE ENGINEERING LICENSE #C-1028

SUBMITTAL
04/15/19
CONSTRUCTION DOCUMENT
SUBMITTAL 01

REVISIONS	

KEY PLAN

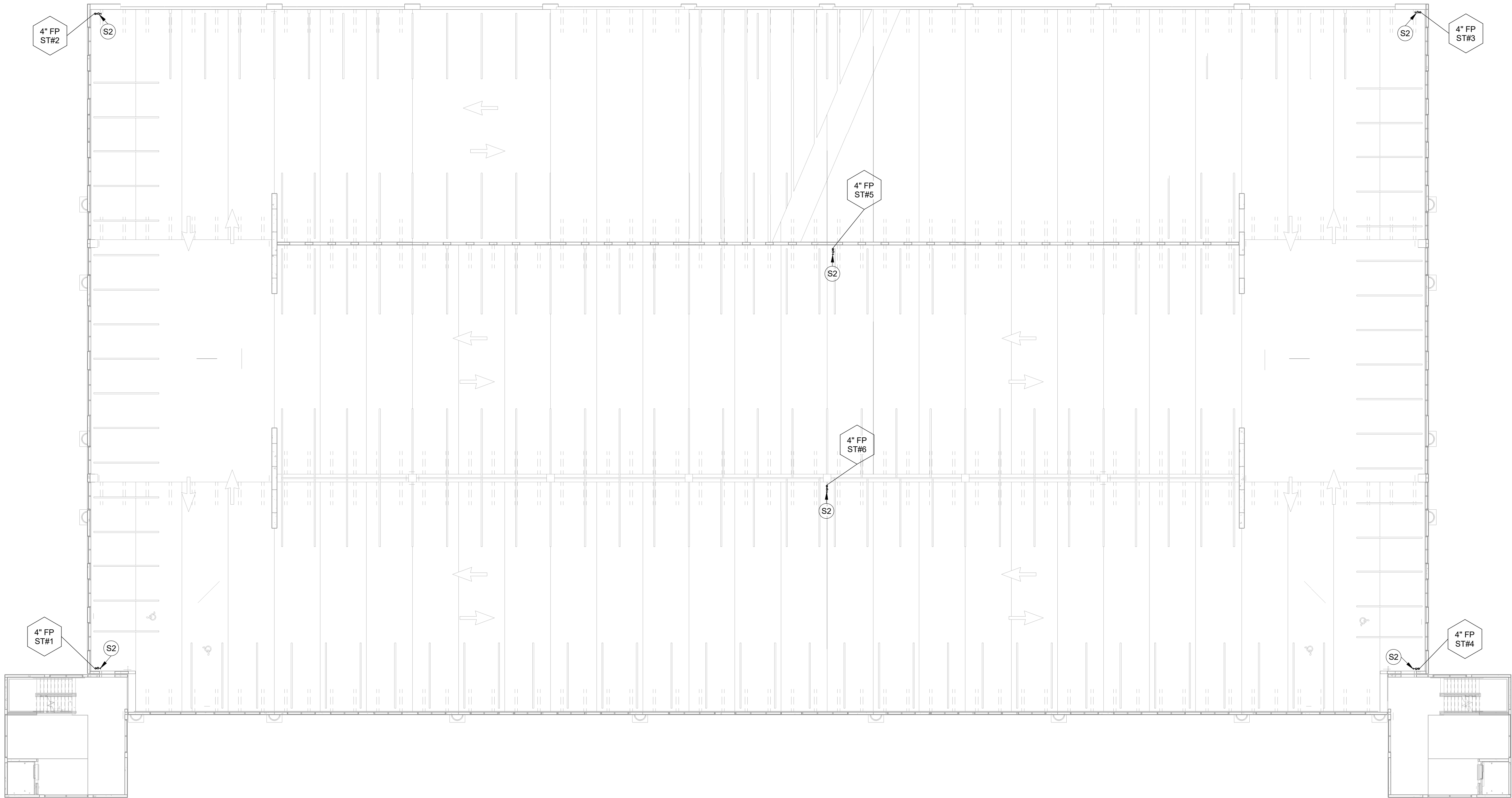
SHEET
SECOND LEVEL - FIRE
PROTECTION PLAN

FP102

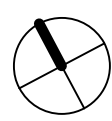
DESIGN: AWB
DRAWN: AWB
REVIEW: CN
CN 8112

4/15/2019 2:57:57 PM
C:\xent\Projects\6172-UNCW\Parking Deck II - P17_ABRANDON@CLARKNEXSEN.COM\14

1
E
D
C
B
A



1 **THIRD LEVEL - FIRE PROTECTION**
1/16" = 1'-0"



FIRE PROTECTION KEYED NOTES	
NO.	DESCRIPTION
S2	2-1/2" FIRE DEPARTMENT HOSE VALVE MOUNTED EXPOSED. THE VALVE SHALL BE PROVIDED WITH A 2-1/2" CAP AND CHAIN, SPANNER LUGS. PROVIDE A 2-1/2" NIPPLE BETWEEN THE VERTICAL RISER AND VALVE CONNECTION. THREADS SHALL MATCH THE WILMINGTON FIRE DEPARTMENT STANDARDS.

UNCW
UNIVERSITY of NORTH CAROLINA WILMINGTON
601 S COLLEGE ROAD
WILMINGTON, NORTH CAROLINA 28403
PARKING DECK II AND SURFACE
PARKING (DESIGN-BUILD)
SOUTH CAMPUS - 4965 RIEGEL ROAD

SCO ID NUMBER: 18-19226-01A
CODE: 441828
ITEM: 301

CONTRACTOR
Balfour Beatty
Construction

DESIGNER
CLARKNEXSEN
1523 ELIZABETH AVENUE, SUITE 300
CHARLOTTE, NORTH CAROLINA 28204
704-377-8800

CLARK NEXSEN LICENSE NUMBER: C-1028

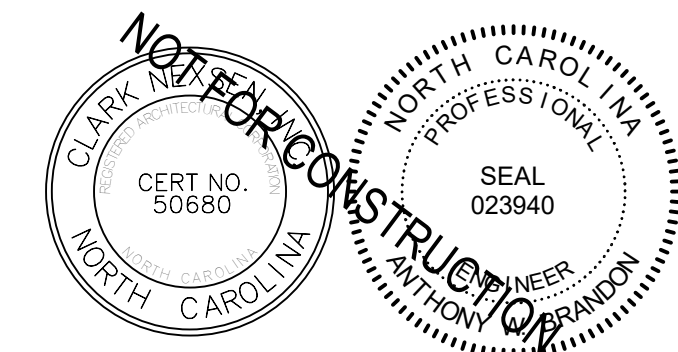
WALKER
CONSULTANTS

13860 Ballantyne Corporate Place
Suite 140
Charlotte, NC 28277
T: 704.247.6230
www.walkerconsultants.com
NC License No. F-0518

MCKIM&CREED

CIVIL ENGINEER
243 NORTH FRONT STREET
WILMINGTON, NORTH CAROLINA
28401
910.343.1048

PROFESSIONAL SEAL



NC CORPORATE ENGINEERING LICENSE #C-1028

SUBMITTAL

04/15/19

CONSTRUCTION DOCUMENT
SUBMITTAL 01

REVISIONS

KEY PLAN

SHEET

THIRD LEVEL - FIRE
PROTECTION PLAN

FP103

DESIGN: AWB
DRAWN: AWB
REVIEW: CN

CN 8112

1

2

3

4

5

6

E

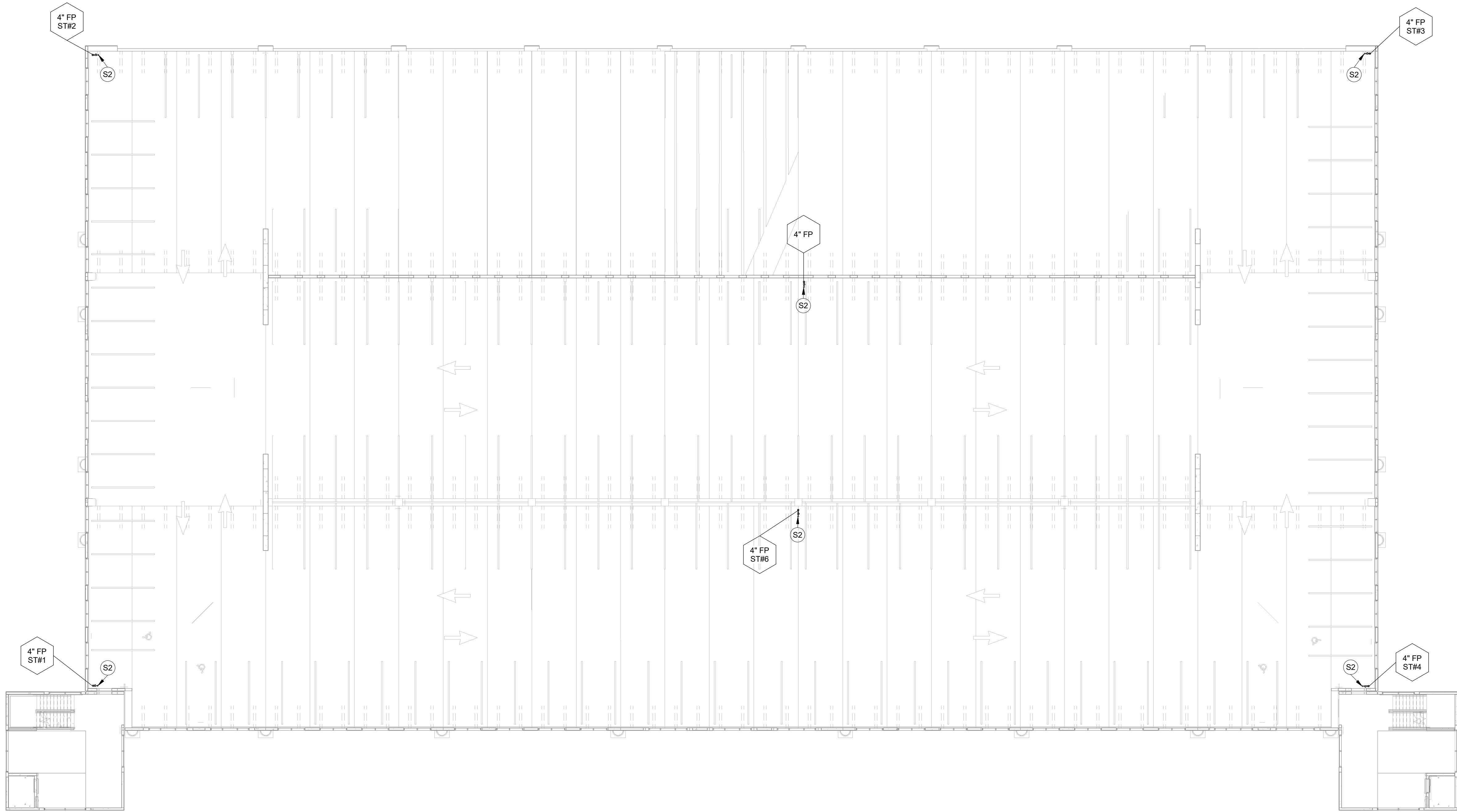
D

C

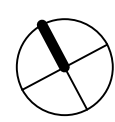
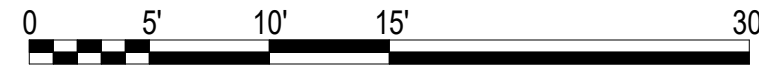
B

A

FIRE PROTECTION KEYED NOTES	
NO.	DESCRIPTION
S2	2-1/2" FIRE DEPARTMENT HOSE VALVE MOUNTED EXPOSED. THE VALVE SHALL BE PROVIDED WITH A 2-1/2" CAP AND CHAIN, SPANNER LUGS. PROVIDE A 2-1/2" NIPPLE BETWEEN THE VERTICAL RISER AND VALVE CONNECTION. THREADS SHALL MATCH THE WILMINGTON FIRE DEPARTMENT STANDARDS.



① **FOURTH LEVEL - FIRE PROTECTION**
1/16" = 1'-0"
1/8" = 1' - 0"



UNIVERSITY of NORTH CAROLINA WILMINGTON
601 S COLLEGE ROAD
WILMINGTON, NORTH CAROLINA 28403
PARKING DECK II AND SURFACE
PARKING (DESIGN-BUILD)
SOUTH CAMPUS - 4965 RIEGEL ROAD

SCO ID NUMBER: 18-19226-01A
CODE: 441828
ITEM: 301

CONTRACTOR

**Balfour Beatty
Construction**

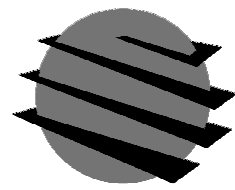
DESIGNER



CLARK NEXSEN

1523 ELIZABETH AVENUE, SUITE 300
CHARLOTTE, NORTH CAROLINA 28204
704-377-8800

CLARK NEXSEN LICENSE NUMBER: C-1028



**WALKER
CONSULTANTS**

13860 Ballantyne Corporate Place
Suite 140
Charlotte, NC 28277
T: 704.247.6230
www.walkerconsultants.com
NC License No. F-0518



CIVIL ENGINEER
243 NORTH FRONT STREET
WILMINGTON, NORTH CAROLINA
28401
910.343.1048

PROFESSIONAL SEAL



NC CORPORATE ENGINEERING LICENSE #C-1028

SUBMITTAL

04/15/19

**CONSTRUCTION DOCUMENT
SUBMITTAL 01**

REVISIONS

KEY PLAN

SHEET

**FOURTH LEVEL - FIRE
PROTECTION PLAN**

FP104

DESIGN: AWB
DRAWN: AWB
REVIEW: CN

CN 8112

4/15/2019 2:38:09 PM
C:\xent\Projects\6172-UNCW\Parking Deck II - P17_ABRANDON@CLARKNEXSEN.COM\14

1
E
D
C
B
A

2

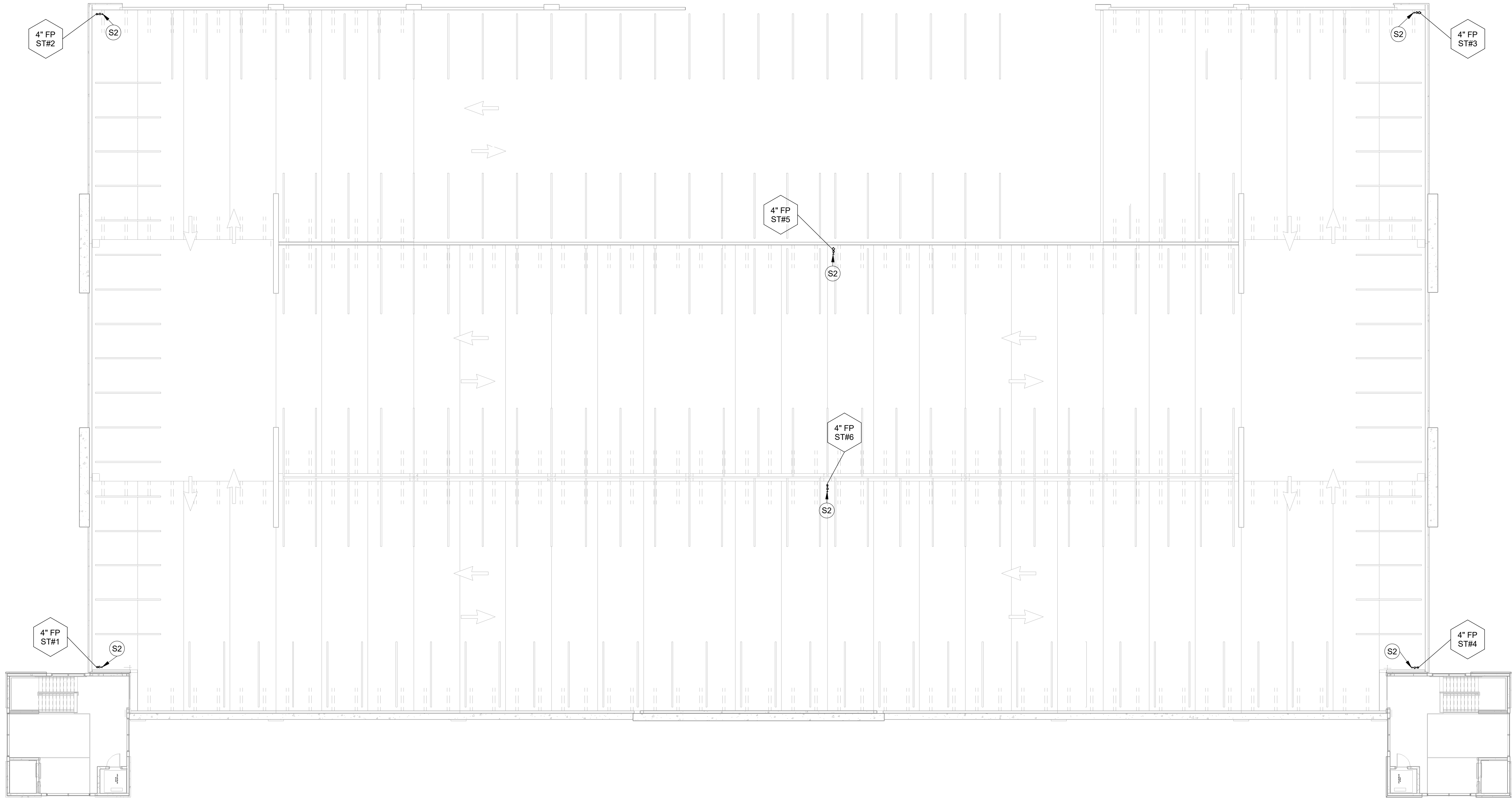
3

4

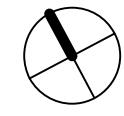
5

6

FIRE PROTECTION KEYED NOTES	
NO.	DESCRIPTION
S2	2-1/2" FIRE DEPARTMENT HOSE VALVE MOUNTED EXPOSED. THE VALVE SHALL BE PROVIDED WITH A 2-1/2" CAP AND CHAIN, SPANNER LUGS. PROVIDE A 2-1/2" NIPPLE BETWEEN THE VERTICAL RISER AND VALVE CONNECTION. THREADS SHALL MATCH THE WILMINGTON FIRE DEPARTMENT STANDARDS.



1 FIFTH LEVEL - FIRE PROTECTION
1/16" = 1'-0"
1/8" = 1' - 0"



UNIVERSITY of NORTH CAROLINA WILMINGTON
601 S COLLEGE ROAD
WILMINGTON, NORTH CAROLINA 28403
PARKING DECK II AND SURFACE
PARKING (DESIGN-BUILD)
SOUTH CAMPUS - 4965 RIEGEL ROAD

SCO ID NUMBER: 18-19226-01A
CODE: 441828
ITEM: 301

CONTRACTOR

Balfour Beatty
Construction

DESIGNER

CLARK NEXSEN

1523 ELIZABETH AVENUE, SUITE 300
CHARLOTTE, NORTH CAROLINA 28204
704-377-8800

CLARK NEXSEN LICENSE NUMBER: C-1028



WALKER
CONSULTANTS

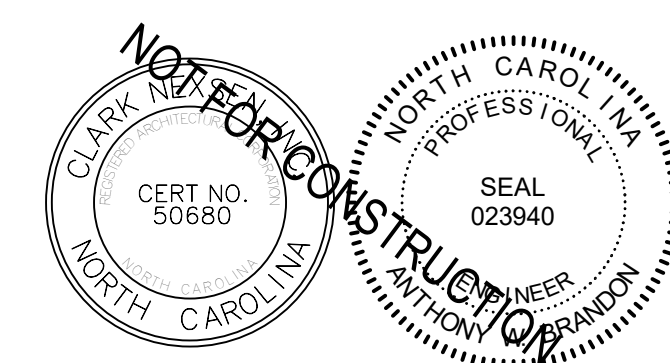
13860 Ballantyne Corporate Place
Suite 140
Charlotte, NC 28277
T: 704.247.6230
www.walkerconsultants.com
NC License No. F-0518



McKIM & CREED

CIVIL ENGINEER
243 NORTH FRONT STREET
WILMINGTON, NORTH CAROLINA
28401
910.343.1048

PROFESSIONAL SEAL



NC CORPORATE ENGINEERING LICENSE #C-1028

SUBMITTAL

04/15/19

CONSTRUCTION DOCUMENT
SUBMITTAL 01

REVISIONS

KEY PLAN

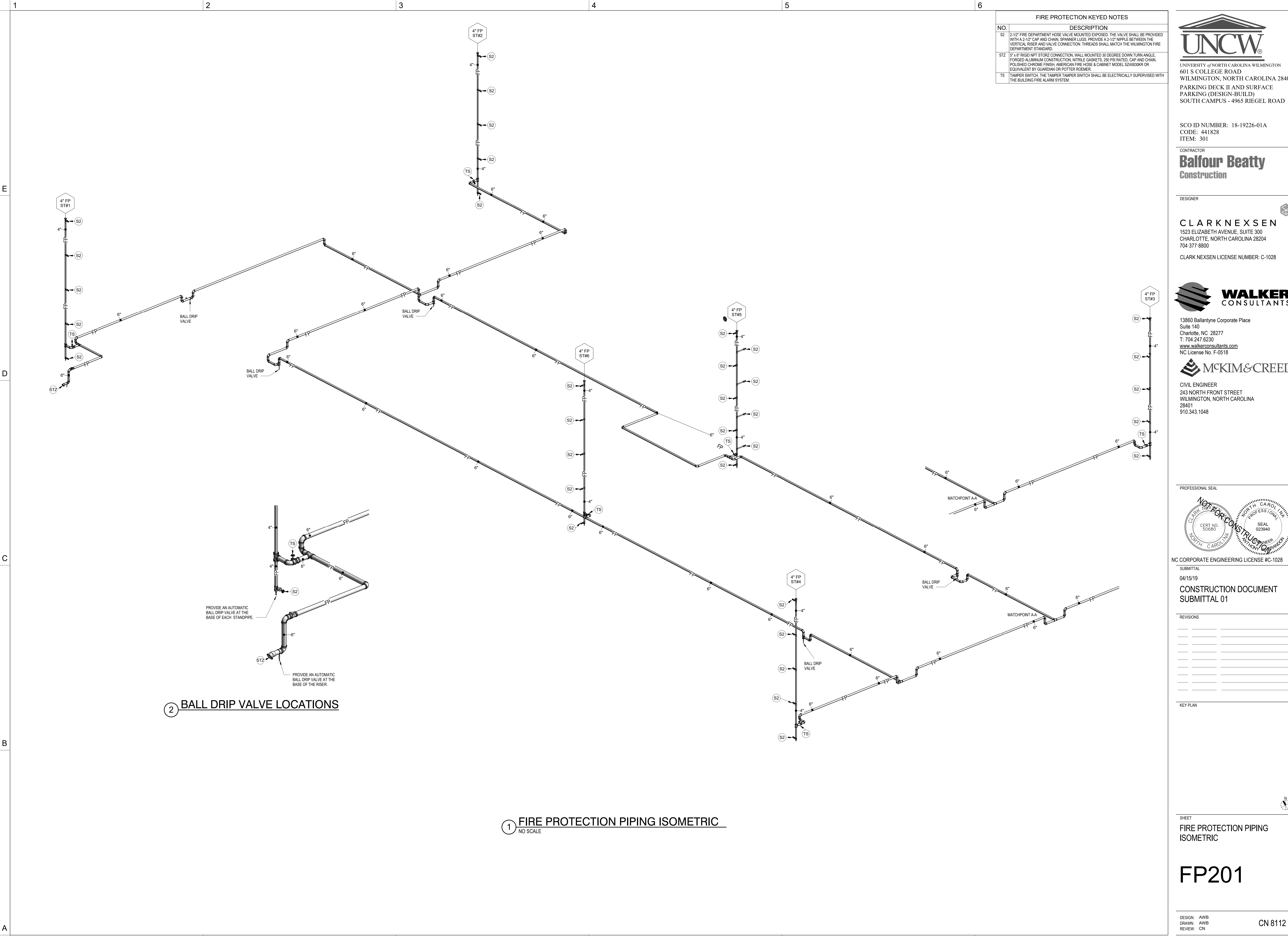
SHEET

FIFTH LEVEL - FIRE
PROTECTION PLAN

FP105

DESIGN: AWB
DRAWN: AWB
REVIEW: CN

CN 8112



FIRE PROTECTION KEYED NOTES	
NO.	DESCRIPTION
S2	2-1/2" FIRE DEPARTMENT HOSE VALVE MOUNTED EXPOSED. THE VALVE SHALL BE PROVIDED WITH A 2-1/2" CAP AND CHAIN, SPANNER LUGS. PROVIDE A 2-1/2" NIPPLE BETWEEN THE VERTICAL RISER AND VALVE CONNECTION. THREADS SHALL MATCH THE WILMINGTON FIRE DEPARTMENT STANDARD.
STZ	5" x 6" RIGID NPT STORZ CONNECTION, WALL MOUNTED 30 DEGREE DOWN TURN ANGLE, FORGED ALUMINUM CONSTRUCTION, NITRILE GASKETS, 250 PSI RATED, CAP AND CHAIN, POLISHED CHROME FINISH, AMERICAN FIRE HOSE & CABINET MODEL S24X630KR OR EQUIVALENT BY GUARDIAN OR POTTER ROEMER.
TS	TAMPER SWITCH. THE TAMPER SWITCH SHALL BE ELECTRICALLY SUPERVISED WITH THE BUILDING FIRE ALARM SYSTEM.

UNCW
UNIVERSITY of NORTH CAROLINA WILMINGTON
601 S COLLEGE ROAD
WILMINGTON, NORTH CAROLINA 28403
PARKING DECK II AND SURFACE
PARKING (DESIGN-BUILD)
SOUTH CAMPUS - 4965 RIEGEL ROAD

SCO ID NUMBER: 18-19226-01A
CODE: 441828
ITEM: 301

CONTRACTOR
Balfour Beatty Construction

DESIGNER
CLARK NEXSEN
1523 ELIZABETH AVENUE, SUITE 300
CHARLOTTE, NORTH CAROLINA 28204
704-377-8800

CLARK NEXSEN LICENSE NUMBER: C-1028

WALKER CONSULTANTS

13860 Ballantyne Corporate Place
Suite 140
Charlotte, NC 28277
T: 704.247.6230
www.walkerconsultants.com
NC License No. F-0518

MCKIM & CREED

CIVIL ENGINEER
243 NORTH FRONT STREET
WILMINGTON, NORTH CAROLINA
28401
910.343.1048

PROFESSIONAL SEAL



NC CORPORATE ENGINEERING LICENSE #C-1028

SUBMITTAL

04/15/19

CONSTRUCTION DOCUMENT
SUBMITTAL 01

REVISIONS

KEY PLAN

SHEET

FIRE PROTECTION PIPING
ISOMETRIC

FP201

DESIGN: AWB
DRAWN: AWB
REVIEW: CN

CN 8112